



Cracking the Code

Forest Carbon Offset Projects in Vermont

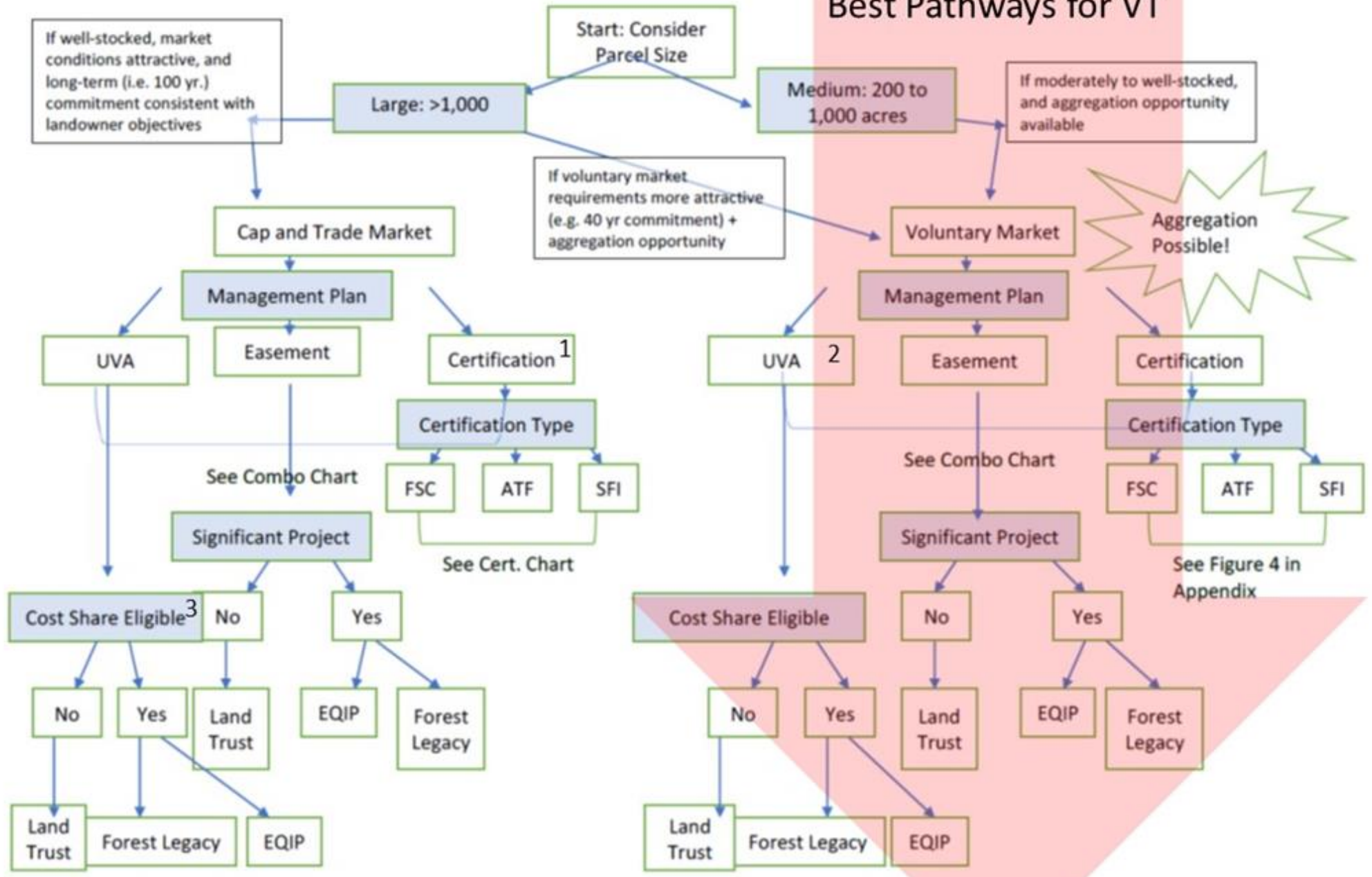
The Keys

- We want to promote forestland conservation combined with improved forest management
- Clear science exists to tell us where and how
- Carbon offsets could help us get there
- Limited activity thus far in Vermont- almost entirely about scale.

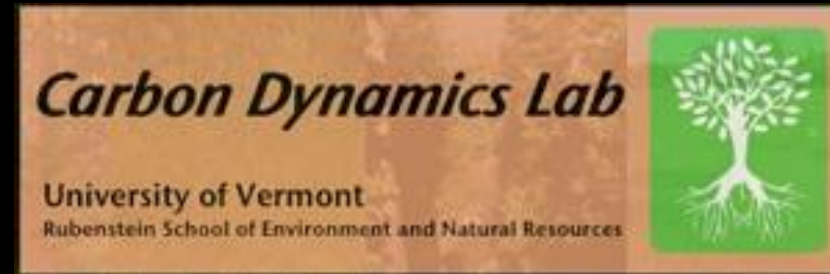
The Carbon Opportunity in Vermont

- **\$45 Million- \$90 Million** per year in sequestered carbon.
- On a per-acre basis? \$100- \$200 per acre, can align with timber management.
- Carbon sequestration from forest growth *exceeds* carbon emissions
- Carbon has an intrinsic value to many Vermonters who care about and see the impacts of climate change.
- Correlates well with a lot of other values that we care about.

Best Pathways for VT



Our Team



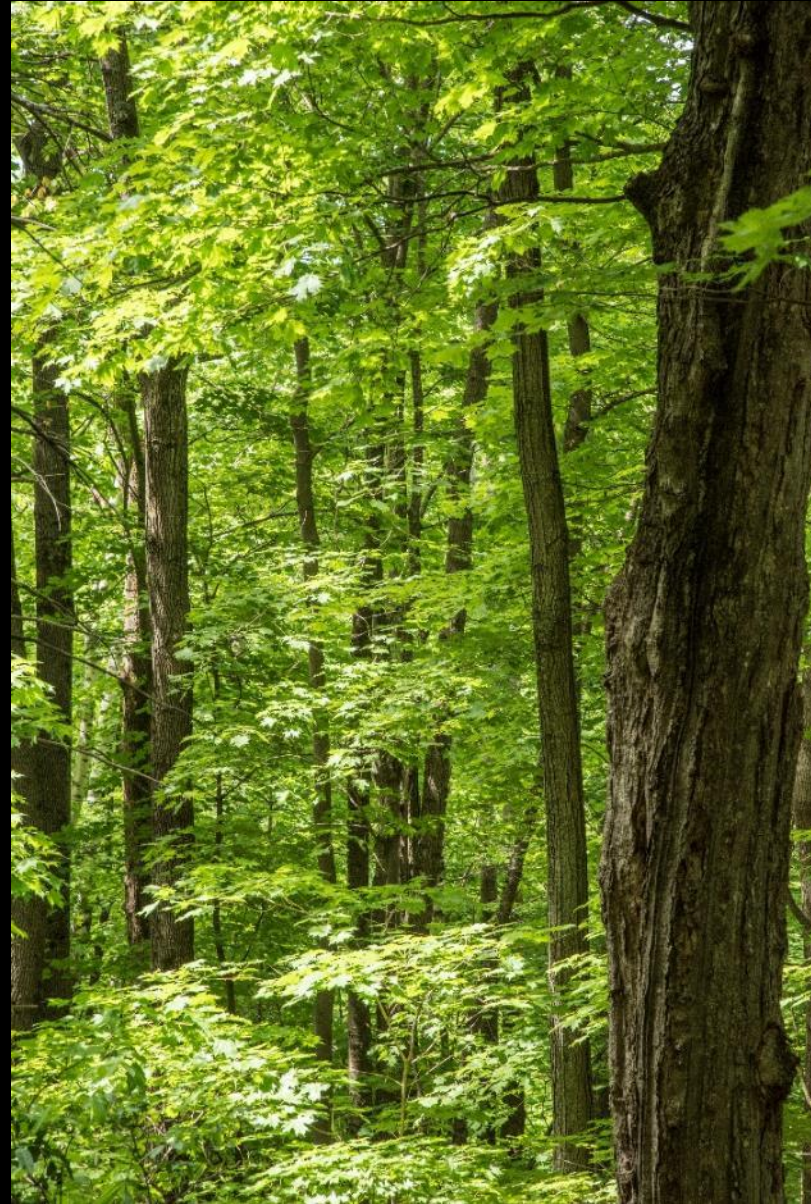
Built on prior work by partners

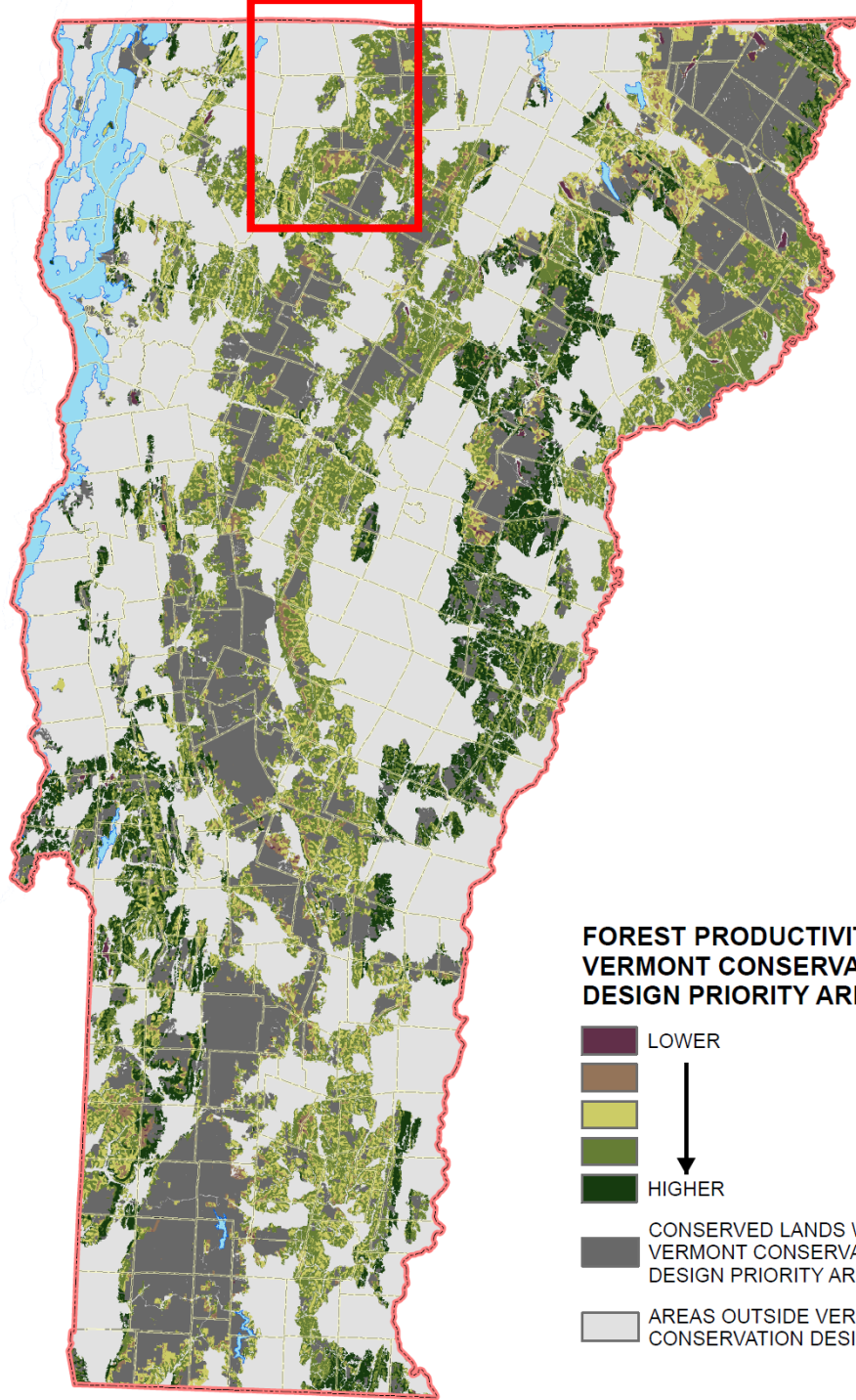
- Northern Forest Center/Manomet Study in 2012
- OSI resilience mapping and Delaware watershed work
- David Publicover, AMC self-developed project in Maine
- Working Woodlands Initiative (TNC)
- DFPR Forest Fragmentation report
- Vermont Conservation Design

A wide-angle landscape photograph of a forested mountain range. The foreground is filled with a dense forest of tall, dark evergreen trees on the left and lighter green deciduous trees on the right. The middle ground shows a large, rounded mountain peak covered in a thick forest of green trees. In the distance, more mountain ranges are visible under a sky filled with large, grey, dramatic clouds. The overall scene is lush and green, suggesting a healthy forest ecosystem.

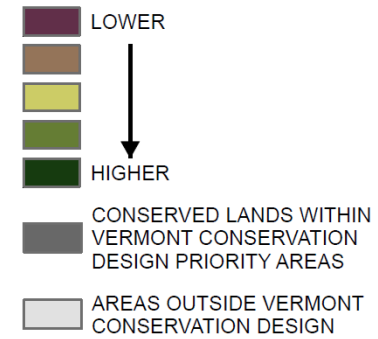
Vermont's Forests

- 75% + of Vermont is in forest cover (4.5 Million acres), approximately 80% of which is privately owned.
- 10% of the privately held land is conserved.
- Many forest parcels remain outside the framework of protection created by state ownership, conservation, and current use.
- We face increasing fragmentation and parcelization (subdivision) leading to the diminishment of a range of ecosystem services.



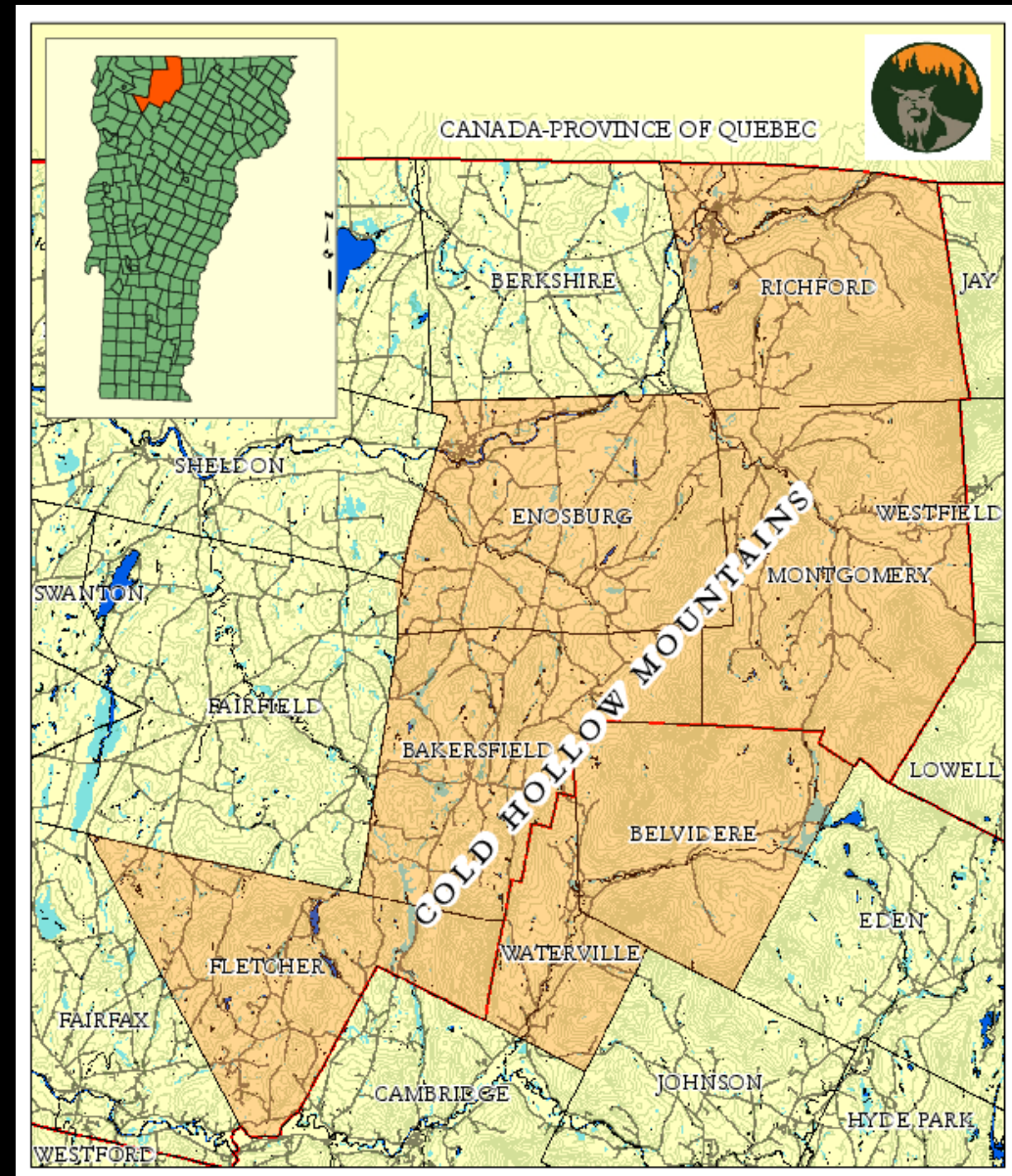


**FOREST PRODUCTIVITY IN
VERMONT CONSERVATION
DESIGN PRIORITY AREAS**



Fostering Community Connections- Cold Hollow to Canada

- Highly regarded Regional Conservation Partnership (RCP)
- Northern Green Mountains Focus
- Grass-roots, all volunteer organization, but high capacity
- Deep relationships with landowners
- Track record of success attracting funding and support





The Project

The Plan

- Elevate carbon conversation in Vermont
- Develop a robust answer to where and how carbon is viable, and share it
- Pick away at the key issues related to scale
- Attract philanthropy to sticking points
- Tie carbon with other ecosystem values
- Aggregate parcels into proof of concept projects (beginning in 2018)



Questions?